



Product Features:

- Available in two heights: 29" and 42".
- Depth options include: 24", 30" and 36".
- Length sizes include: 60", 72", 84" and 96".
- Tables offered in wood veneer, laminate and solid surface.
- Solid surface available in white only.
- To order a non-standard solid surface color, please specify the manufacturer, pattern name and color number. Please contact Client Services to confirm pricing.
- Offered with or without interior and exterior metal accents, in various combinations. Please refer to specific pages for details.
- Metal accents available in four standard finishes: #06 Charcoal Grey, #90 Metallic Silver, #91 Chrome and #95 Satin Black.
- Premium finishes also available. Please refer to standard finish card.
- Tables feature black reveal between top edge of panels and table-top.
- When specifying white laminate or solid surface, reveal will be white.
- For tables intended to be placed end-to-end, please select applicable option code without exterior metal accents (-MA0) or with exterior metal accent on single side only. (-MA3)
- Panel bases and underside of tables feature removable panels for wire management accessibility.
- All panel bases feature adjustable glides as standard for leveling purposes.
- Ships KD. Assembly required.
- To ship fully assembled, set-up charge will be \$500 List per unit.
- Optional power units available. Please refer to pages 5-7 for options.
- All dimensions are nominal.

Veneer Table Features:

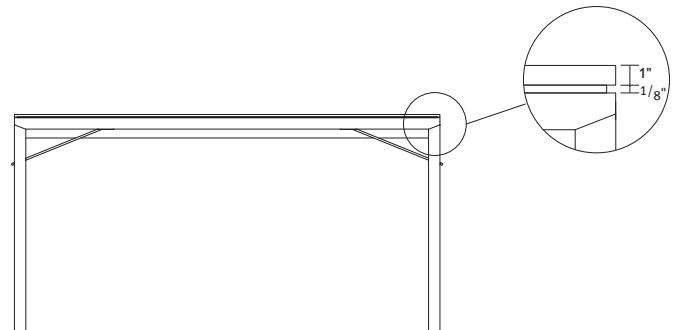
- Three wood species available: Ash, Maple and Walnut.
- For custom wood finishes, please contact Client Services and add one-time upcharge of \$325 List per color per order.
- Due to natural variations of grain and color in woods, slight variations may occur.
- Veneer direction will run lengthwise on all table sizes.
- Edge finish will match top finish unless specified otherwise.

Laminate Table Features:

- Laminate available in all standard colors.
- If white laminate is desired for top and panel bases, it is recommended to utilize Formica 949-58 White Matte with a ColorCore® 2 edge detail in matching 949C-58 White Matte to eliminate the black line that occurs with traditional laminates. Please specify and add \$300 List to the laminate pricing column.
- For custom laminate options, add \$550 List per color per order. Pre-approval required, please contact Client Services.
- Laminate wood grain direction will run lengthwise on all table sizes.
- Self edge standard, unless otherwise specified (laminate applied to edge).

Solid Surface Top Features:

- Solid surface available in white only.
- To order a non-standard solid surface color, please specify the manufacturer, pattern name and color number. Please contact Client Services to confirm pricing.
- Solid surface not available on table edges or on panel bases.
- Please specify wood or laminate finish for the table interior surface and panel bases, which will also be applied to the edge.





Standard Wood Finishes:

Ash

- #162 White Oak on Ash
- #164 Cocoa Ash
- #166 Smoky Umber Ash
- #163 Walnut on Ash
- #165 Kona Ash
- #167 Slate Grey Ash

Maple

- #10 Natural Maple
- #21 Caramel Maple
- #31 Cinnamon Maple
- #41 Autumn Maple
- #115 Cocoa Maple
- #11 Natural Beech on Maple
- #26 Ebony Maple
- #36 Bourbon Maple
- #71 Kona Maple

Walnut

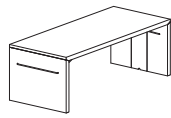
- #29 Natural Walnut
- #35 Bourbon Walnut
- #30 Cinnamon Walnut

Standard Laminates:

- Formica 459-58 Brite White
- Nevamar WM005T Siren Maple
- Wilsonart 7954-38 Natural Rift
- Pionite SG228-SD Slate
- Wilsonart 7935K-07 Shaker Cherry
- Formica 7739-58 Cocoa Maple
- Pionite WY160-SD Absolute Acajou
- Pionite SE101-AW Black Ashwood
- Nevamar WM8340T Clear Maple
- Pionite WM951-SD Honey Maple
- Wilsonart 7937-38 River Cherry
- Wilsonart 7039-78 Windsor Mahogany
- Wilsonart 7122-K-07 Empire Mahogany
- Nevamar WM-0047T Iconic Maple
- Pionite WX421-PV Witchcraft
- Wilsonart 1595-60 Black

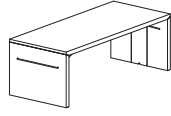
For non-standard laminates, add \$550 List per color per order. Pre-approval required, please contact Client Services.

- Three table surface options: wood veneer, laminate and solid surface.
 - Three wood species: Ash, Maple and Walnut.
 - Available in all standard wood finishes. Please refer to listing on page 2.
 - For custom wood finishes, please contact Client Services and add one-time upcharge of \$325 List per color per order.
 - Laminate available in all standard colors. Please refer to listing on page 2.
 - For custom laminate options, add \$550 List per color per order. Pre-approval required, please contact Client Services.
 - Solid surface available in white only.
 - Metal accents available in four standard finishes. Please refer to listing below.
 - Premium finishes also available.
 - Self-edge standard.
 - When ordering solid surface, wood or laminate finish must be specified for table interior surface, panel bases and edge.
 - Ships KD (knocked down). Assembly required.
 - Optional power units available. Please refer to pages 5-8 for options and standard placement.
 - All dimensions are nominal.
- Ordering Procedures:**
- Specify model number, surface material, surface finish and metal finish (as applicable).
 - List option model number after appropriate table model number (e.g. 8122-246029-PF02).



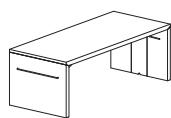
**Interior/Exterior Metal Accents
24" Depth, 29" Height**

Model	Dimensions	Maple Veneer or Laminate	Ash or Walnut Veneer	Solid Surface (-SF) Add upcharge to applicable wood species column	Weight For veneer, laminate and ColorCore 2 tables only
8122-246029-(-)	24" D x 60" L x 29" H	3,998	4,839	881	149 lbs.
8122-247229-(-)	24" D x 72" L x 29" H	4,333	5,304	911	165 lbs.
8122-248429-(-)	24" D x 84" L x 29" H	4,564	5,540	942	172 lbs.
8122-249629-(-)	24" D x 96" L x 29" H	4,768	5,750	973	179 lbs.



**Interior/Exterior Metal Accents
30" Depth, 29" Height**

8122-306029-(-)	30" D x 60" L x 29" H	4,498	5,593	1,069	160 lbs.
8122-307229-(-)	30" D x 72" L x 29" H	4,708	5,803	1,257	176 lbs.
8122-308429-(-)	30" D x 84" L x 29" H	4,949	6,050	1,445	182 lbs.
8122-309629-(-)	30" D x 96" L x 29" H	5,183	6,289	1,633	190 lbs.



**Interior/Exterior Metal Accents
36" Depth, 29" Height**

8122-366029-(-)	36" D x 60" L x 29" H	4,442	5,289	1,099	171 lbs.
8122-367229-(-)	36" D x 72" L x 29" H	4,843	5,819	1,287	187 lbs.
8122-368429-(-)	36" D x 84" L x 29" H	5,115	6,096	1,475	193 lbs.
8122-369629-(-)	36" D x 96" L x 29" H	5,354	6,336	1,663	202 lbs.

Standard Metal Accent Finishes

- #06 Charcoal Grey
- #90 Metallic Silver
- #91 Chrome
- #95 Satin Black

Premium Metal Accent Finishes

- #07 Gold Shimmer
- #08 Penny
- #09 Brown Sugar
- #83 Metallic Champagne
- #94 Cotton

Options

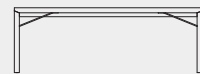
-PF02	Premium Metal Finish	\$80
-MA0	No Metal Accents	n/c
-MA2	Interior Metal Accents Only	n/c
-MA3	Interior Metal Accents - Both Sides Exterior Metal Accent - Single Side	n/c

MA0



No Metal Accents

MA2



Interior Metal Accents Only

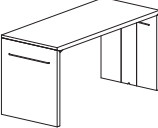
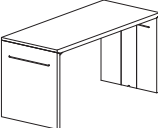
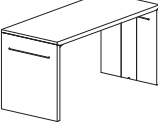
MA3



Interior Metal Accents - Both Sides
Exterior Metal Accents - Single Side

- Three table surface options: wood veneer, laminate and solid surface.
 - Three wood species: Ash, Maple and Walnut.
 - Available in all standard wood finishes. Please refer to listing on page 2.
 - For custom wood finishes, please contact Client Services and add one-time upcharge of \$325 List per color per order.
 - Laminate available in all standard colors. Please refer to listing on page 2.
 - For custom laminate options, add \$550 List per color per order. Pre-approval required, please contact Client Services.
 - Solid surface available in white only.
 - Metal accents available in four standard finishes. Please refer to listing below.
 - Premium finishes also available.
 - Self-edge standard.
 - When ordering solid surface, wood or laminate finish must be specified for table interior surface, panel bases and edge.
 - Ships KD (knocked down). Assembly required.
 - Optional power units available. Please refer to pages 5-8 for options and standard placement.
 - All dimensions are nominal.
- Ordering Procedures:**
- Specify model number, surface material, surface finish and metal finish (as applicable).
 - List option model number after appropriate table model number (e.g. 8122-246029-PF02).



Model	Dimensions	Maple Veneer or Laminate	Ash or Walnut Veneer	Solid Surface (-SF) Add upcharge to applicable wood species column	Weight For veneer, laminate and ColorCore 2 tables only	
Interior/Exterior Metal Accents 24" Depth, 42" Height						
	8122-246042-(-)	24" D x 60" L x 42" H	4,612	5,712	881	157 lbs.
	8122-247242-(-)	24" D x 72" L x 42" H	4,816	5,922	911	173 lbs.
	8122-248442-(-)	24" D x 84" L x 42" H	5,029	6,135	942	180 lbs.
	8122-249642-(-)	24" D x 96" L x 42" H	5,233	6,344	973	189 lbs.
Interior/Exterior Metal Accents 30" Depth, 42" Height						
	8122-306042-(-)	30" D x 60" L x 42" H	5,350	6,947	1,069	168 lbs.
	8122-307242-(-)	30" D x 72" L x 42" H	5,590	7,192	1,257	184 lbs.
	8122-308442-(-)	30" D x 84" L x 42" H	5,831	7,440	1,445	190 lbs.
	8122-309642-(-)	30" D x 96" L x 42" H	6,041	7,649	1,633	199 lbs.
Interior/Exterior Metal Accents 36" Depth, 42" Height						
	8122-366042-(-)	36" D x 60" L x 42" H	5,966	7,941	1,099	179 lbs.
	8122-367242-(-)	36" D x 72" L x 42" H	6,211	8,186	1,287	195 lbs.
	8122-368442-(-)	36" D x 84" L x 42" H	6,489	8,470	1,475	201 lbs.
	8122-369642-(-)	36" D x 96" L x 42" H	6,758	8,745	1,663	211 lbs.

Standard Metal Accent Finishes

- #06 Charcoal Grey
- #90 Metallic Silver
- #91 Chrome
- #95 Satin Black

Premium Metal Accent Finishes

- #07 Gold Shimmer
- #08 Penny
- #09 Brown Sugar
- #83 Metallic Champagne
- #94 Cotton

Options

- PF02 Premium Metal Finish \$80
- MA0 No Metal Accents n/c
- MA2 Interior Metal Accents Only n/c
- MA3 Interior Metal Accents - Both Sides
Exterior Metal Accents - Single Side n/c

MA0



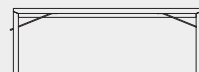
No Metal Accents

MA2



Interior Metal Accents Only

MA3



Interior Metal Accents - Both Sides
Exterior Metal Accents - Single Side

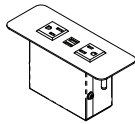
- Unit below is corded and available for top surface and/or side-mount placement. Refer to pages 6-7 for daisy chain options.
- Side-mount placement may be specified on inside or outside of panel bases.
- **Please specify if power unit is to be placed on table top, inside base panel or outside base panel.**
- Cord length should be taken into account when specifying electrical placement.
- **Power source location must be identified.**
- **For single power unit placed on table top, location will be centered as standard.**
- For panel base placement, refer to page 8 for power unit standard locations.
- Panel bases and underside of tables feature removable panels for wire management accessibility.
- To add power cord exit to the exterior base panel, please specify "-PC02" and add \$75 List.

Model

Description

List

PB3-S, Silver Finish
PB3-W, White Finish



Power Band 3

- Dimensions: 6.5" W x 2.5" D
- Two (2) simplex outlets and two (2) USB charging ports.
- 108" electrical cord.
- UL listed.

450

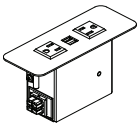
- Daisy chain units are required when more than one electrical unit is specified on one top.
- To determine jumper cable length, measure length from edge of electrical unit to end of table.
- Every connection point must be a female-to-male or male-to-female connection (all daisy chain power units feature male ends).

Model

Description

List

PB3-DC-S, Silver Finish
PB3-DC-W, White Finish



Power Band 3 Daisy Chain

- Dimensions: 6.5" W x 2.5" L
- Two (2) simplex outlets and two (2) USB charging ports.
- UL listed.

595

PB-ST-CD-72

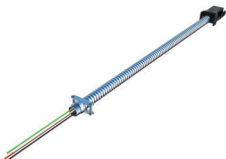


Power Band Starter Cable, 72" Long, Corded Plug Infeed

- Must select either corded or hardwire starter cable, which goes from power source in wall or floor to first Power Band Unit.

255

PB-ST-HW-()



Power Band Starter Cable, Hardwire Infeed

- Must select either corded or hardwire starter cable, which goes from power source in wall or floor to first Power Band Unit.

see table

Model	Length	List
PB-ST-HW-72	72"	175
PB-ST-HW-108	108"	205
PB-ST-HW-120	120"	225

- Daisy chain units are required when more than one electrical unit is specified on one top.
- To determine jumper cable length, measure length from edge of electrical unit to end of table.
- Every connection point must be a female-to-male or male-to-female connection (all daisy chain power units feature male ends).

Model

Description

List

PB3-FF-()



Power Band Jumper Cables, Female to Female

- Typically used to connect two (2) units together.
- For additional lengths in 12" increments, please add \$25 List per foot.

see table

Model	Length	List
PB-FF-30	30"	145
PB-FF-36	36"	145
PB-FF-48	48"	155
PB-FF-54	54"	160
PB-FF-60	60"	165
PB-FF-72	72"	175

PB-FM-()



Power Band Jumper Cables, Female to Male

- Typically used to connect two (2) units together.
- For additional lengths in 12" increments, please add \$25 List per foot.

see table

Model	Length	List
PB-FM-30	30"	145
PB-FM-36	36"	145
PB-FM-48	48"	155
PB-FM-54	54"	160
PB-FM-60	60"	165
PB-FM-72	72"	175

PB-T



Power Band T-Connector

- Used when power is needed to go in two directions.
- Two (2) male ends and one (1) female end.

160

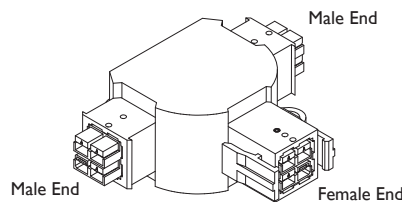
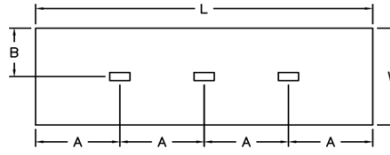
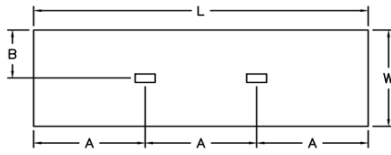
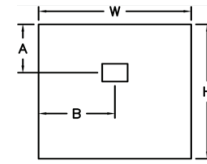


Table Top Positioning



Panel Base (inside & outside)



2 Power Units

W x L	A	B
24" x 60"	20"	5"
24" x 72"	24"	5"
24" x 84"	28"	5"
24" x 96"	32"	5"
30" x 60"	20"	15"
30" x 72"	24"	15"
30" x 84"	28"	15"
30" x 96"	32"	15"
36" x 60"	20"	18"
36" x 72"	24"	18"
36" x 84"	28"	18"
36" x 96"	32"	18"

3 Power Units

W x L	A	B
24" x 60"	15"	5"
24" x 72"	18"	5"
24" x 84"	21"	5"
24" x 96"	24"	5"
30" x 60"	15"	15"
30" x 72"	18"	15"
30" x 84"	21"	15"
30" x 96"	24"	15"
36" x 60"	15"	18"
36" x 72"	18"	18"
36" x 84"	21"	18"
36" x 96"	24"	18"

1 Power Unit

W x L	A	B
24" x 29"	10.25"	5"
30" x 29"	10.25"	15"
36" x 29"	10.25"	18"
24" x 42"	10.25"	5"
30" x 42"	10.25"	15"
36" x 42"	10.25"	18"

For custom power unit placement, please contact Client Services to verify location can be accommodated.