

VA IDIQ LOOKBOOK





Located in Southern California, Arcadia and Encore provide innovative seating and table solutions for large and small facilities alike. Specializing in products designed for public and shared spaces, our comprehensive offering is a reflection of modern styling combined with thoughtful functionality and endless possibilities.

As an IDIQ contract holder since 2019, we are proud to support the service-disabled veteran-owned business community and have created this lookbook to showcase our most popular collections, as well as provide inspiration, for designing spaces to meet the demands of today, tomorrow and beyond.

To explore our full catalog of products, please visit our websites at arcadiacontract.com and encoreseating.com.

Sustainability is central to our operating philosophy, influencing everything from design and manufacturing to our vendor partnerships. Most Arcadia and Encore seating collections are BIFMA LEVEL® 1 certified, reflecting rigorous environmental and social responsibility standards. In addition, the majority of our portfolio carries SCS Indoor Advantage Gold certification, the highest level for indoor air quality, ensuring healthier spaces. Through continual evaluation and smarter solutions, we remain committed to driving progress and building a more sustainable future.



IDIQ APPROVED PRODUCT COLLECTIONS



VA Greenville Outpatient Clinic - Achella Modular Collection



Achella
lounger, modular
and occasional tables



Archetype
occasional tables



Flipside
benches and
modular seating



Flirt
guest/nesting chairs
and meeting tables



Haven
guest/tandem/modular, lounge,
benches and occasional tables



Leaf
lounger, modular
and benches



Lineup
guest/tandem seating



Nios
occasional tables



Ovate
occasional tables



Reprise
guest/tandem



Scenery
benches, lounge
and modular



Soa
guest/tandem



Theme
guest chairs



Uptown Social
lounger, modular
and benches

ACHELLA

Embodies creative freedom in public seating, enabling inspired arrangements that adapt seamlessly to the dynamics of healthcare environments.



ARCHETYPE

Defined by structured forms and the beauty of contrast, creating statement pieces that lend character and refinement to waiting spaces.



FLIPSIDE

A durable metal frame, together with suspension-webbed seat cushions for lasting comfort and a wide range of configuration options, there's no better place to be.



FLIRT

Optimizes diverse healthcare settings, creating environments that comfort, support and uplift.



HAVEN

A comprehensive offering of guest, tandem and ancillary seating products that combine classic style with noteworthy substance.



LEAF

Lounge chairs, benches and tables exist beautifully alone or as coordinated ensembles to provide elegant functionality for large and small waiting environments alike.



LINEUP

Thrives in healthcare settings whether used individually or in combination, bringing a sense of purpose to its surroundings.



NIOS

A purposeful base facilitates power capability to keep devices charged and always at the ready.



OVATE

Offered in multiple shapes and sizes to bring a classic and timeless aesthetic to healing spaces.



REPRISE

Contributes to a calming environment while withstanding the toughest of demands.



SCENERY

Creates a comfortable hub that supports casual conversation and quick touchpoints within one cohesive, multi-use setting.



SOA

Embracing softer forms, from an elliptical tube frame and radiused arm caps, to comfort-inducing seat and back cushions, its soothing presence creates a warm and welcoming space for all.



THEME

Blends the richness and natural beauty of wood with soft upholstered curves, balancing traditional elements with modern detailing for a distinctive presence in healthcare spaces.



UPTOWN SOCIAL

Maximizes the potential of care spaces, promoting comfort and supporting every stage of the healing journey.



Encore

IDIQ APPROVED PRODUCT COLLECTIONS



Chance
guest/stacking chairs



Hado
guest chairs



Hoom
guest chairs



Kitsy
guest chairs



Mayland
guest and lounge



Mozie
guest/stack chairs and
occasional tables



Pepa
guest chairs



Playground
benches, lounge
and modular



Plumeya
guest chairs



Sunny Kids
seating and tables

CHANCE

Guest and bariatric chairs that stand the test of time for clinical spaces, ancillary seating requirements and more.



HADO

A streamlined guest chair that offers the best of comfort in settings that support well-being and ease.



HOOM

Featuring refined curves and tailored detailing, guest chairs are available in multiple base styles to accommodate any and all purposes.



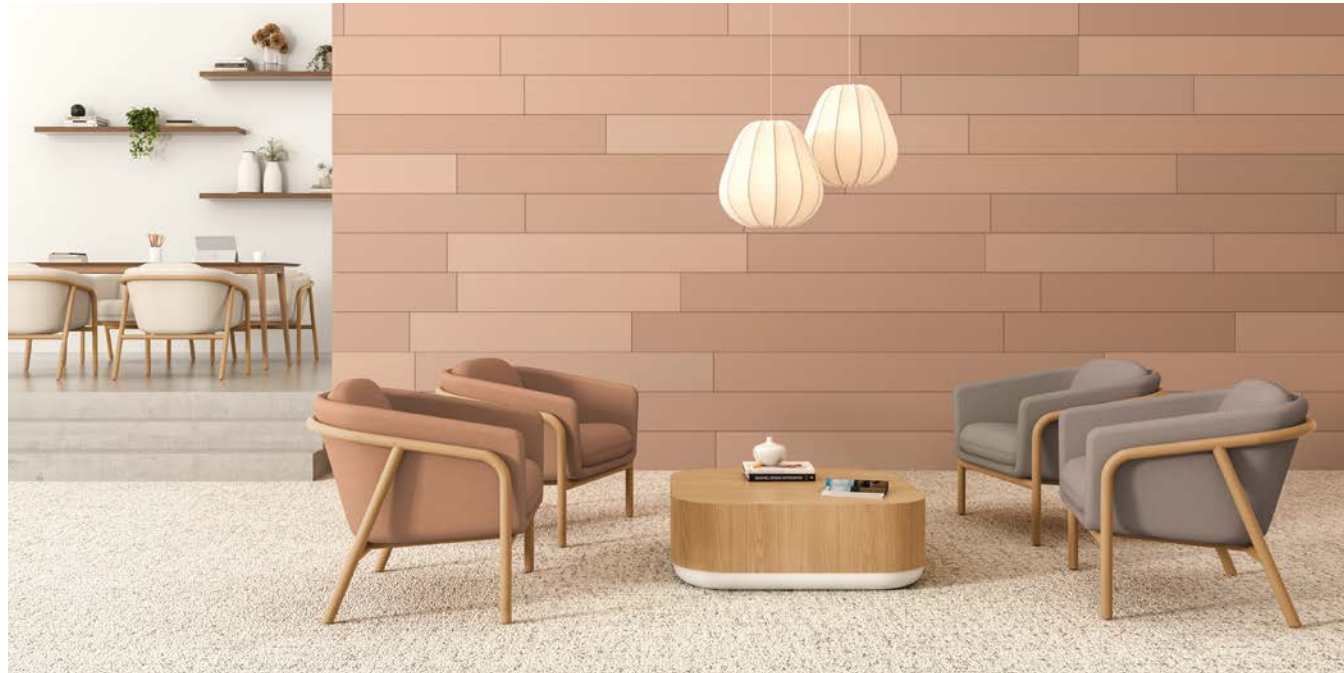
KITSY

An abundantly functional guest chair offering versatility, cleanability and stackability for a wide range of healthcare applications.



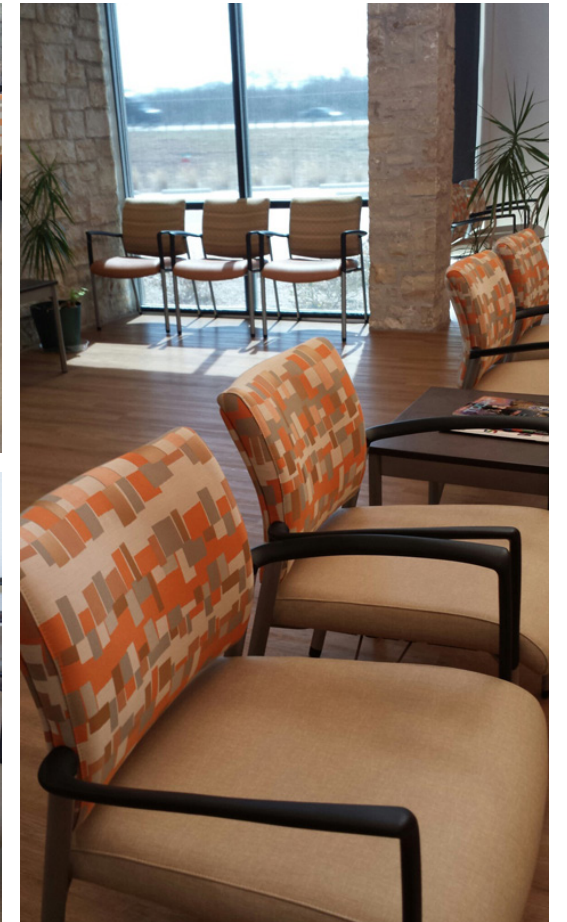
MAYLAND

Guest and lounge chairs feature a supportive frame and relaxed comfort, ensuring a calming experience for any length of stay.



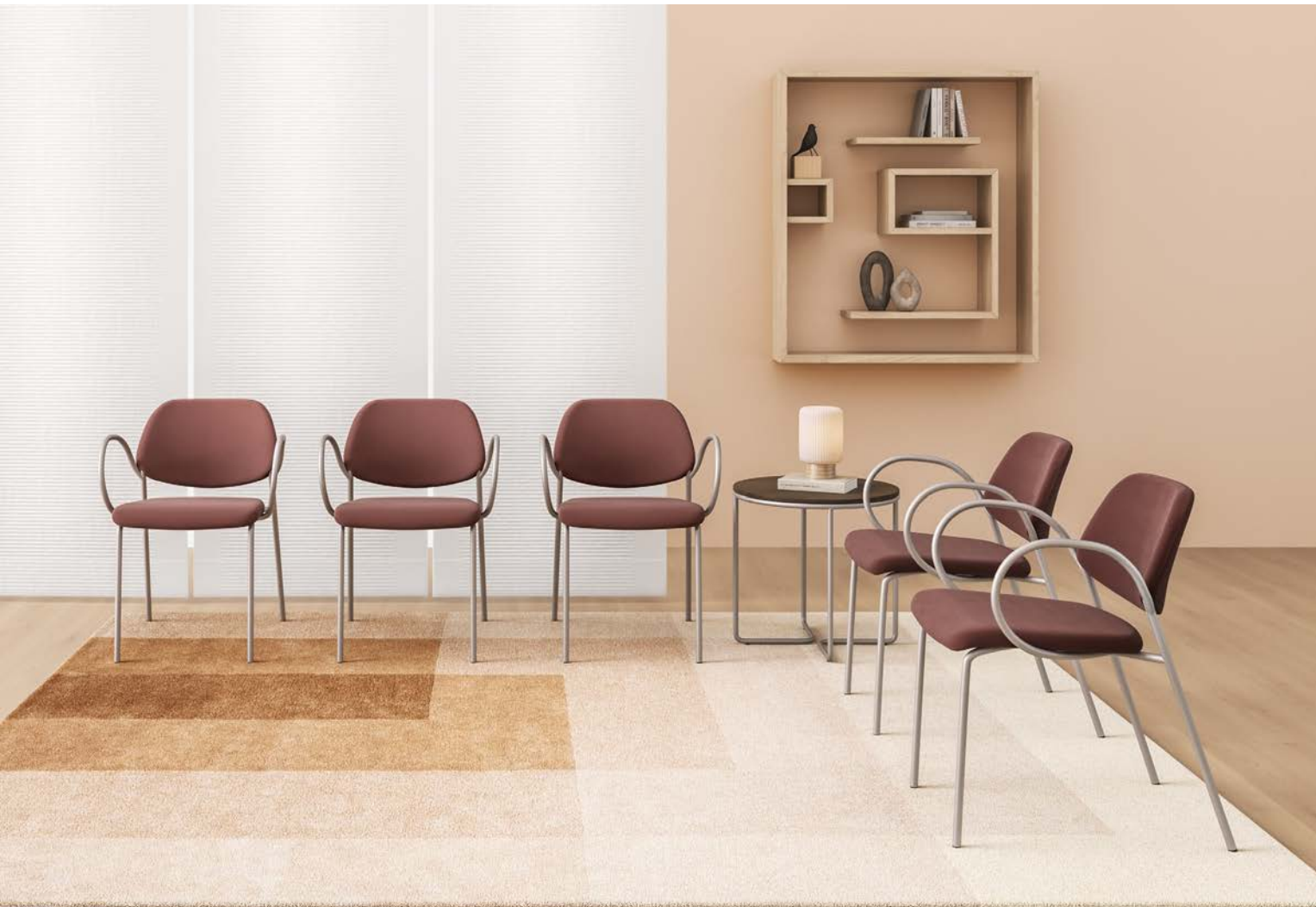
MOZIE

Strides past conventional standards with highly functional, convenient stacking capabilities and performance tailored for high-traffic spaces.



PEPA

Stackable, space-saving seating designed for flexible healthcare settings including training rooms, break areas and multi-use spaces.



PLAYGROUND

A multipurpose modular bench collection delivering configuration flexibility to accommodate evolving wellness environments.



PLUMEYA

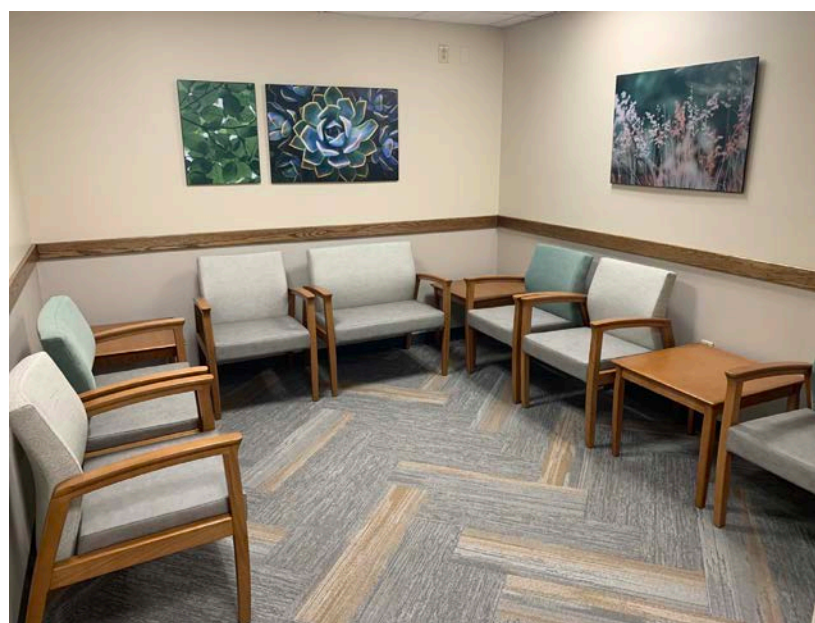
Soft, supportive seating with gentle contours that enhances comfort across patient, guest and care environments.



SUNNY KIDS

Whimsical design and sturdy construction combine for playful, kid-friendly functionality.





arcadia | Encore